



Ingredient Technical Brief

6th Annual Ocean Spray Cranberries, Inc. Student Product Development Competition

Presscake: A byproduct of sweetened dried cranberry (SDC) manufacturing, presscake is the solid material remaining after the initial juice extraction from fresh cranberries, including pieces of cranberries too small to infuse to make SDCs.

Presscake Specifications	
°Brix (@ 20°C)	0.5 – 2.0
Titrateable Acidity (% w/w as citric)	0.15 – 0.60
Moisture Content (% w/w)	65 - 85
Form	Shredded cranberry hulls
Flavor, Aroma & Color	Normal odor & flavor, free from off notes; Pink to red characteristics of the variety



Nutritional Analysis Presscake Per 100 g unrounded

Calories	137
Calories from Fat	13.1
Total Carbohydrates	27.7 g
Total Sugars	< 0.1 g
Added Sugars	0 g
Dietary Fiber	21.2 g
Protein	3.30 g

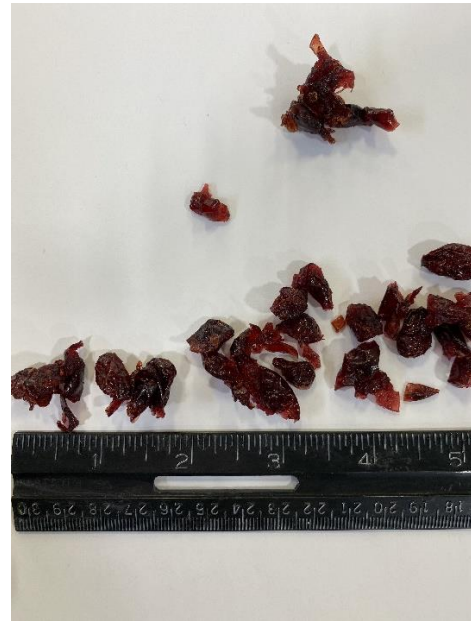


Total Fat	1.46 g
Saturated Fat	0.18 g
Trans Fat	0 g
Moisture	67.4 g
Vitamin A	0.0 mg
Vitamin C	6.0 mg
Calcium	13.3 mg
Magnesium	14.2 mg
Phosphorus	52.7 mg
Potassium	42.5 mg
Sodium	< 1.95 mg

Fines:

SDC Fines are dried, infused cranberry bits that are screened out for being too small to meet finished product quality standards.

Cranberry Fines Specifications	
°Brix (@ 20°C)	78.0 – 82.0
Titrateable Acidity (% w/w as citric)	1.65 – 1.95
Oil (% by weight)	0.2 – 1.0
Appearance, Aroma, & Flavor	Small, deep red pieces of infused cranberries; sweet with characteristic cranberry flavors; free from off flavor & aroma





Nutritional Analysis Sweetened Dried Cranberry Fines
Per 100 g - unrounded

Calories	325
Calories from Fat	6.03
Total Carbohydrates	82.50 g
Total Sugars	72.50 g
Added Sugars	65.00 g
Dietary Fiber	6.36 g
Protein	0.47 g
Total Fat	0.67 g
Saturated Fat	0.07 g
Trans Fat	0.0 g
Moisture	16.31 g
Vitamin A	44.50 IU / 2.23 RAE
Calcium	1.61 mg
Phosphorus	7.68 mg
Potassium	43.33 mg
Sodium	8.98 mg

**Low Color (LC)
 Cranberry Juice
 Concentrate:**

LC Cranberry juice concentrate is viscous pink liquid prepared from the extracted, depectinized and filtered juice of sound, clean cranberries (*Vaccinium macrocarpon*).

LC Cranberry Juice Conc. Specifications	
°Brix (@ 20°C)	50 +/- 0.05
PAC (% DWB)	< 1.2
Titrateable Acidity (% w/w as citric)	15.3 +/- 2.3
Appearance & Aroma (as a concentrate)	Crystal clear, medium pink color, typical cranberry aroma w/ no off notes
Appearance, Aroma, & Flavor (as Beverage)	Crystal clear, pink to medium red color, clean, cranberry aroma, sweet & sour taste, with low to moderate acidity



Nutritional Analysis LC Cranberry Juice Concentrate
Per 100 g

Calories	198
Calories from Fat	0
Total Carbohydrates	49.3 g
Total Sugars	22.02 g
Added Sugars	0 g
Dietary Fiber	< 0.5 g
Protein	0.27 g
Total Fat	< 0.25 g
Saturated Fat	0 g
Trans Fat	0 g
Cholesterol	0 mg
Moisture	49.24 g
Ash	1.21 g
Vitamin C	58.0 mg
Calcium	39.0 mg
Iron	1.70 mg
Magnesium	24.0 mg
Phosphorus	28.0 mg
Potassium	500.0 mg
Sodium	14.0 mg